

Our world has become a toxic place.
Divine - a holistic approach to health, specialising in
the impact of chemicals on the body.

Divine
BY THERESE KERR



A world where what we put IN our bodies and ON our skin matters - more than most people understand or appreciate.

The Facts...

Divine
BY THERESE KERR

Safe until proven otherwise

10,500 chemicals

Only 11% tested over the last 30 years (E.W.G. Report).

Tested in isolation

Generations to determine cost to health.

The Facts...



Skin absorption % and rate x 10.

Fragrance – “Proprietary Interests”

Fragrance and Phthalates.

What are Phthalates & why are they used

Almost all conventional products contain fragrance)

The Facts...

Phthalates are the number one “gender bender”.

Dose doesn't determine the poison

The very thing that a woman thinks makes her feel more feminine (using fragranced products), is the very thing that is costing her, her femininity, according to Dr Carole Hungerford.

Obesogens

The Facts...

World Health Organisation report – 2012:

- Semen quality has dropped by 40%
- Genital malformation in baby boys has increased by 400%
- TIP OF THE ICEBERG

Most chemicals are toxic

The number one disease for children under 15 is cancer.

Our Endocrine System

Divine
BY THERESE KERR

What is our Endocrine System?

Hypothalamus

Pituitary

Pineal

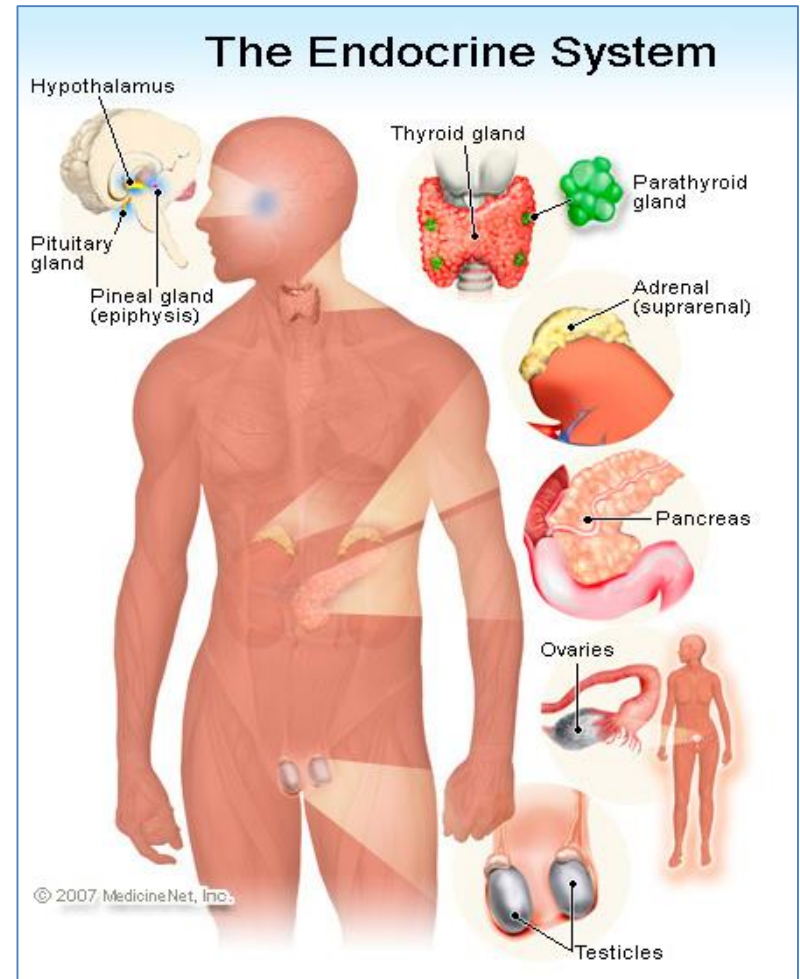
Thyroid

Parathyroid,

Adrenals

Pancreas

Ovaries and Testes.



The importance of our Endocrine System.

Divine
BY THERESE KERR

Tuning Fork for the body

The endocrine system role

Children at greater risk

Parents' exposure to certain chemicals may produce unexpected -- and tragic -- effects in their children, even decades later.

Breast Milk is the best option for a baby, but how contaminated is breast milk?

Divine
BY THERESE KERR

Pfr Marc Cohen:

“Fat soluble
chemicals get
transferred to our
children in utero.”



“One of the quickest ways for a woman to detox is through pregnancy and breastfeeding.” What is the impact of this transfer?

Choosing organic wisely....

Divine
BY THERESE KERR

Misrepresentation as to the use of the word “organic”.

Labeling is deceptive.



So, what's in your everyday products?



So, what's in your everyday products?

Extracted from "The Chemical Maze" by Bill Statham

11:28 PM 44%
CHEMICAL MAZE COMPLETE EDITION
Phenoxyethanol
(derived from phenol and ethylene oxide, ethylene glycol monophenyl ether, petroleum derived, restricted in Japan)

Functions
Fixative, Preservative

Potential Effects
Absorbed via the skin, Effects from exposure may include eye irritation, headache, tremors and CNS depression, Mild irritation on sensitive skin, Safe as used up to 5% (CIR), Suspected reproductive and developmental toxicity (Scorecard), Toxic to the kidneys, the nervous system and the liver (MSDS)

Possible Uses
Cosmetic

< Home +Favourites Share XREF

9:28 AM 76%
CHEMICAL MAZE COMPLETE EDITION
Sodium benzoate (211/E211)
(petroleum derived, sodium salt of benzoic acid)

Functions
Preservative

Potential Effects
Asthma, FIN and HACSG recommend to avoid, Headache, Hyperactivity, May damage DNA in cells, People sensitive to aspirin may wish to avoid, Prohibited in foods for infants, Skin irritation, Stomach upset

Possible Uses
Food
fruit juice, jam, pickles, soft drinks
Other
cosmetics, medicines, pet food, vaccines

< Home +Favourites Share XREF

5:22 PM 93%
CHEMICAL MAZE COMPLETE EDITION
Sodium laureth sulphate
(SLES, may be palm oil derived, petroleum derived, sodium lauryl ether sulphate, sodium salt of sulfated ethoxylated lauryl alcohol)

Functions
Cleansing, Foaming, Surfactant

Potential Effects
Dry skin, May cause or aggravate acne, May contain trace amounts of ethylene oxide or dioxane, Safe as used up to 50% (CIR), Skin, eye or lung irritation

Possible Uses
Cosmetic
acne treatment, body wash, bubble bath, conditioner, facial cleanser, liquid hand soap, shampoo

< Home +Favourites Share XREF

So, what's in your everyday products?

Extracted from "The Chemical Maze" by Bill Statham

5:16 PM 94%
CHEMICAL MAZE COMPLETE EDITION
Sodium fluoride
(banned in oral products in Canada, may be manufactured by reacting hydrofluoric acid with sodium carbonate)

Functions
Anti-plaque, Oral care

Potential Effects
Bone cancer, Bone fractures, Dental fluorosis, Not assessed for safety in cosmetics by CIR, Osteomalacia, Suspected cardiovascular, respiratory, developmental, liver, musculoskeletal and neurotoxicity (Scorecard)

Possible Uses
Cosmetic
breath freshener, mouthwash, tooth whitener, toothpaste

< Home +Favourites Share XREF

11:18 PM 48%
CHEMICAL MAZE COMPLETE EDITION
Triclosan
(chlorinated aromatic compound, petroleum derived, restricted in cosmetics in Japan and Canada)

Functions
Preservative

Potential Effects
Allergic reactions, May be contaminated with chloroform and dioxin, Safe for use in cosmetics in the present practices of use and concentration (CIR), Skin, eye and lung irritation, Suspected skin, sense organ and immunotoxicity (Scorecard), Wildlife and environmental toxicity

Possible Uses
Cosmetic
deodorant, facial cleanser, liquid hand soap.

< Home +Favourites Share XREF

10:46 PM 55%
CHEMICAL MAZE COMPLETE EDITION
Fragrance
(individual ingredients are not identified, mostly synthetic, parfum)

Functions
Deodorant, Masking

Potential Effects
Allergic reactions, Asthma, Not assessed for safety in cosmetics by CIR, Suspected immuno and neurotoxicity

Possible Uses
Cosmetic
most cosmetic products
Other
household products

< Home +Favourites Share XREF

So, what's in your everyday products?

Divine
BY THERESE KERR

Extracted from "The Chemical Maze" by Bill Statham

12:04 AM 39%
CHEMICAL MAZE COMPLETE EDITION

Propylene glycol
(petroleum derived)

Functions
Humectant, Skin conditioning, Solvent, Viscosity controlling

Potential Effects
Eczema, Penetration enhancement, Safe when formulated to be non-irritating (CIR), Sensitisation, Skin irritation, Suspected respiratory, immuno and neurotoxicity (Scorecard)

Possible Uses
Cosmetic
anti-aging, conditioner, facial cleanser, mascara, moisturiser, shampoo, styling gel

Other

< Home +Favourites Share XREF

11:26 PM 45%
CHEMICAL MAZE COMPLETE EDITION

Octocrylene
(from the cinnamate group of chemicals, restricted in cosmetics in Japan)

Functions
UV absorber, UV filter

Potential Effects
Absorbs into the skin, Not assessed for safety in cosmetics by CIR, Persistent and bio-accumulative in wildlife, Produces damaging reactive oxygen species upon exposure to sunlight (free radicals etc.)

Possible Uses
Cosmetic
baby sunscreen, lip balm, moisturiser, sunless tanning, sunscreen, tanning oil

< Home +Favourites Share XREF

9:40 PM 53%
CHEMICAL MAZE COMPLETE EDITION

Aluminium chlorohydrate
(complex inorganic salt, made by reacting aluminum with hydrochloric acid)

Functions
Astringent, Deodorant

Potential Effects
Not assessed for safety in cosmetics by CIR, See aluminium compounds

Possible Uses
Cosmetic
antiperspirant
Other
water purification

CAS

< Home +Favourites Share XREF

So, what's in your everyday products?

Extracted from "The Chemical Maze" by Bill Statham

9:50 PM 61%
CHEMICAL MAZE COMPLETE EDITION

Triethanolamine
(petroleum derived, reaction of ethylene oxide and ammonia)

Functions
Buffering

Potential Effects
Asthma, Contact dermatitis, Safe for use in rinse-off products; 5% in leave-ons (CIR), Sensitisation, Should not be used in products containing nitrosating agents (CIR), Suspected respiratory and immunotoxicity (Scorecard)

Possible Uses
Cosmetic
anti-aging, facial cleanser, mascara, moisturiser, styling gel

< Home +Favourites Share XREF

9:28 AM 76%
CHEMICAL MAZE COMPLETE EDITION

Sodium benzoate (211/E211)
(petroleum derived, sodium salt of benzoic acid)

Functions
Preservative

Potential Effects
Asthma, FIN and HACSG recommend to avoid, Headache, Hyperactivity, May damage DNA in cells, People sensitive to aspirin may wish to avoid, Prohibited in foods for infants, Skin irritation, Stomach upset

Possible Uses
Food
fruit juice, jam, pickles, soft drinks
Other
cosmetics, medicines, pet food, vaccines

< Home +Favourites Share XREF

10:44 PM 56%
CHEMICAL MAZE COMPLETE EDITION

Cocamidopropyl betaine
(CAPB, derived from coconut oil and dimethylaminopropylamine, semisynthetic)

Functions
Cleansing, Foam boosting, Surfactant

Potential Effects
Allergic reactions, May cause sensitisation, May contain harmful impurities, Safe as used in rinse-off products (CIR), Safe up to 3% in leave-on products (CIR), Suspected immunotoxicity (Scorecard)

Possible Uses
Cosmetic
baby soap, bubble bath, cleanser, shampoo, toothpaste

< Home +Favourites Share XREF

So, what's in your everyday products?

Extracted from "The Chemical Maze" by Bill Statham

12:24 PM 83% battery

Back CHEMICAL MAZE COMPLETE EDITION

Alcohol - denatured
(ethanol rendered undrinkable using toxic chemicals, may be petroleum derived, may be synthesised from ethylene, acetylene or methane, methylated spirits)

Functions
Solvent

Potential Effects
Birth defects, Considered broadly toxic, Neurotoxicity, Safe as used up to 99% (CIR), Skin irritation, Suspected teratogen (DPIM)

Possible Uses
Cosmetic
cleanser, deodorant, fragrances, hair colour and bleach, hair spray, mascara, perfume

< Home +Favourites Share XREF

12:27 PM 82% battery

Back CHEMICAL MAZE COMPLETE EDITION

Isopropyl alcohol
(an aliphatic alcohol, isopropanol, may be petroleum derived)

Functions
Anti-foaming, Solvent, Viscosity controlling

Potential Effects
Not assessed for safety in cosmetics by CIR, Skin dryness and irritation, Suspected respiratory, kidney, cardiovascular, developmental, liver and neurotoxicity (Scorecard)

Possible Uses
Cosmetic
conditioner, hair colour and bleach, mascara, nail polish

< Home +Favourites Share XREF

12:28 PM 82% battery

Back CHEMICAL MAZE COMPLETE EDITION

Ammonia
(inorganic gas, may be petroleum derived, may be produced from natural gas)

Functions
Buffering

Potential Effects
Allergic rhinitis (hay fever), Asthma, Bronchitis, Not assessed for safety in cosmetics by CIR, Skin irritation, Very toxic to aquatic organisms

Possible Uses
Cosmetic
hair colour and bleach
Other
cigarettes, fertiliser, household products

< Home +Favourites Share XREF

Solutions

Divine
BY THERESE KERR

Summary:

If you don't want endocrine disrupting, carcinogenic, neuro and immuno toxic chemicals in your body, the solution is simple:

Don't put them in your body

Don't put them on your body

Help support what we are doing and follow us on social media:

<https://www.facebook.com/divinebytheresekerr>

Instagram: DivineByThereseKerr

Live Educated, Be Empowered and
Live Chemical-Free (& remove toxins
from your & your family's lives today)

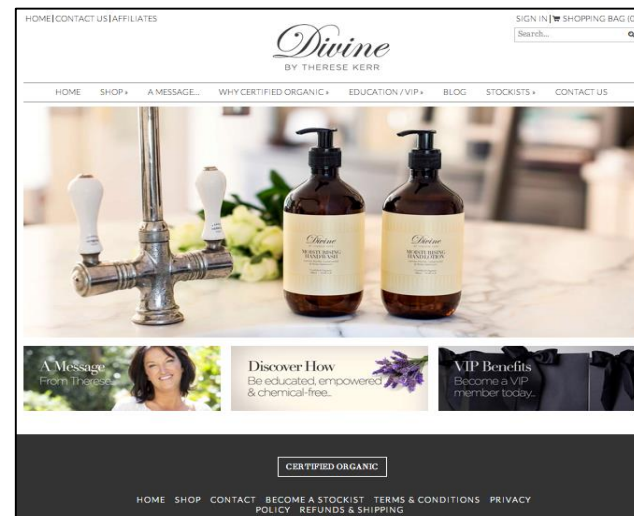
Divine
BY THERESE KERR

Specials for events only...

Pack 1: Buy the following Divine products for
\$226.55 which includes

- 1 x 500ml Moisturising Hand Wash
- 1 x 350ml Moisturising Body Wash
- 1 x 500ml Moisturising Hand & Body Lotion
- 1 x 50ml Sanitising Hand Gel
- 1 x 100ml Pump Spray Deodorant
- 1 x 90ml Peppermint Tooth Mousse
- 1 x 90ml Lemon Myrtle Tooth Mousse
- 1 x 250ml Mouth Rinse
- 1 x 30ml Fresh Breath

And **receive a free 500ml Moisturising Hand Wash**
valued at \$39.95 **or** *Moisturising Body Wash* valued at
\$34.95



Live Educated, Be Empowered
and Live Chemical-Free (& remove
toxins from your & your family's lives today)

Divine
BY THERESE KERR

Specials for events only...

Pack 2 - Buy a Hand Care Pack for \$84.90
which includes

1 x 500ml Body Wash

1 x 500ml Body Lotion

and **receive a free Sanitising Hand Gel** valued at
\$14.95

Pack 3 - Buy a Personal Hygiene Pack for
\$88.80 which includes:

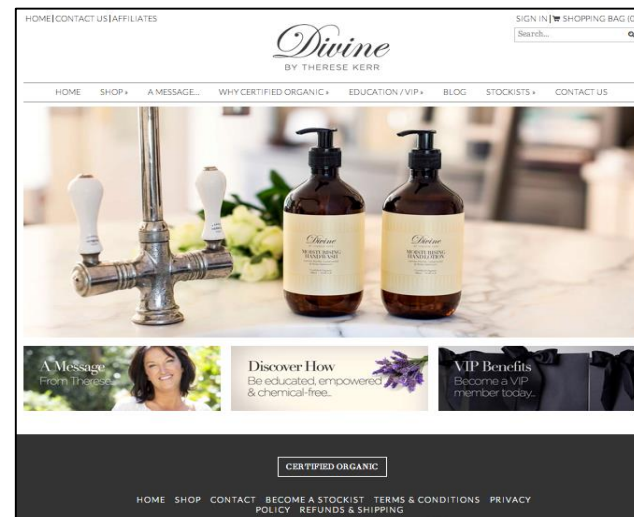
1 x 300ml Body Wash

1 x 90ml Tooth Mousse

1 x 100ml Pump Spray Deodorant

1 x 50ml Sanitising Hand Gel

and **receive a free Tooth Mousse** valued at \$19.95



Thank you..

Divine
BY THERESE KERR

Follow us on social media:

www.divinebytheresekerr.com

<https://www.facebook.com/divinebytheresekerr>

<https://www.facebook.com/divinebabycareproducts>

<https://www.facebook.com/ThereseKerrOfficial>

<https://twitter.com/divinebytk>

https://twitter.com/Therese_Kerr

You cannot unlearn what you have now learned, please help us share this message.

Thank you for the grace of your listening.

Solutions

Divine
BY THERESE KERR

Summary:

If you don't want endocrine disrupting, carcinogenic, neuro and immuno toxic chemicals in your body, the solution is simple:

*Don't put them **in** your body*

*Don't put them **on** your body*

Help support what we are doing and follow us on social media:

<https://www.facebook.com/divinebytheresekerr>

Instagram: DivineByThereseKerr

Thank you..

Divine
BY THERESE KERR

Our company goal:

To educate others as to the little known toxic impacts of everyday chemicals on our lives.

To empower others such that they can make informed choices for their health.

To provide the highest quality certified organic, nutrient and antioxidant-rich products such that people can remove the chemical burden they place on their and their children's bodies each and replace it with natural, certified organic products that *support, not hinder* the body.